



# Title Plan - LT 507200

---

**Survey Number** LT 507200  
**Surveyor Reference** 1500-138804-01 Lakes 3GH  
**Surveyor** Michael Peter Dewhirst  
**Survey Firm** Harrison Grierson Consultants Ltd  
**Surveyor Declaration** I Michael Peter Dewhirst, being a licensed cadastral surveyor, certify that:  
(a) this dataset provided by me and its related survey are accurate, correct and in accordance with the Cadastral Survey Act 2002 and the Rules for Cadastral Survey 2010, and  
(b) the survey was undertaken by me or under my personal direction.  
Declared on 31 Mar 2017 09:55 AM

---

## Survey Details

**Dataset Description** Lots 236-239, 413-503, 911-912, 973, 978-979 & 1005 being a subdivision of Lot 1004 DP 501173  
**Status** Approved as to Survey  
**Land District** South Auckland  
**Submitted Date** 31/03/2017  
**Survey Class** Class A  
**Survey Approval Date** 06/04/2017  
**Deposit Date**

---

## Territorial Authorities

Tauranga City

---

## Comprised In

CT 748092

---

## Created Parcels

Parcels	Parcel Intent	Area	CT Reference
Lot 236 Deposited Plan 507200	Fee Simple Title	0.0765 Ha	769810
Lot 237 Deposited Plan 507200	Fee Simple Title	0.0894 Ha	769811
Lot 238 Deposited Plan 507200	Fee Simple Title	0.0599 Ha	769812
Lot 239 Deposited Plan 507200	Fee Simple Title	0.0540 Ha	769813
Lot 413 Deposited Plan 507200	Fee Simple Title	0.0605 Ha	769814
Lot 414 Deposited Plan 507200	Fee Simple Title	0.0487 Ha	769815
Lot 415 Deposited Plan 507200	Fee Simple Title	0.0455 Ha	769816
Lot 416 Deposited Plan 507200	Fee Simple Title	0.0450 Ha	769817
Lot 417 Deposited Plan 507200	Fee Simple Title	0.0433 Ha	769818
Lot 418 Deposited Plan 507200	Fee Simple Title	0.0432 Ha	769819
Lot 419 Deposited Plan 507200	Fee Simple Title	0.0433 Ha	769820
Lot 420 Deposited Plan 507200	Fee Simple Title	0.0352 Ha	769821
Lot 421 Deposited Plan 507200	Fee Simple Title	0.0433 Ha	769822
Lot 422 Deposited Plan 507200	Fee Simple Title	0.0445 Ha	769823
Lot 423 Deposited Plan 507200	Fee Simple Title	0.0433 Ha	769824
Lot 424 Deposited Plan 507200	Fee Simple Title	0.0629 Ha	769825
Lot 425 Deposited Plan 507200	Fee Simple Title	0.0634 Ha	769826
Lot 426 Deposited Plan 507200	Fee Simple Title	0.0555 Ha	769827
Lot 427 Deposited Plan 507200	Fee Simple Title	0.0481 Ha	769828
Lot 428 Deposited Plan 507200	Fee Simple Title	0.0432 Ha	769829

# Title Plan - LT 507200

---

## Created Parcels

Parcels	Parcel Intent	Area	CT Reference
Lot 429 Deposited Plan 507200	Fee Simple Title	0.0407 Ha	769830
Lot 430 Deposited Plan 507200	Fee Simple Title	0.0407 Ha	769831
Lot 431 Deposited Plan 507200	Fee Simple Title	0.0431 Ha	769832
Lot 432 Deposited Plan 507200	Fee Simple Title	0.0473 Ha	769833
Lot 433 Deposited Plan 507200	Fee Simple Title	0.0573 Ha	769834
Lot 434 Deposited Plan 507200	Fee Simple Title	0.0569 Ha	769835
Lot 435 Deposited Plan 507200	Fee Simple Title	0.0473 Ha	769836
Lot 436 Deposited Plan 507200	Fee Simple Title	0.0473 Ha	769837
Lot 437 Deposited Plan 507200	Fee Simple Title	0.0358 Ha	769838
Lot 438 Deposited Plan 507200	Fee Simple Title	0.0372 Ha	769839
Lot 439 Deposited Plan 507200	Fee Simple Title	0.0529 Ha	769840
Lot 440 Deposited Plan 507200	Fee Simple Title	0.0430 Ha	769841
Lot 441 Deposited Plan 507200	Fee Simple Title	0.0611 Ha	769842
Lot 442 Deposited Plan 507200	Fee Simple Title	0.0482 Ha	769843
Lot 443 Deposited Plan 507200	Fee Simple Title	0.0450 Ha	769844
Lot 444 Deposited Plan 507200	Fee Simple Title	0.0582 Ha	769845
Lot 445 Deposited Plan 507200	Fee Simple Title	0.0512 Ha	769846
Lot 446 Deposited Plan 507200	Fee Simple Title	0.0512 Ha	769847
Lot 447 Deposited Plan 507200	Fee Simple Title	0.0530 Ha	769848
Lot 448 Deposited Plan 507200	Fee Simple Title	0.0576 Ha	769849
Lot 449 Deposited Plan 507200	Fee Simple Title	0.0576 Ha	769850
Lot 450 Deposited Plan 507200	Fee Simple Title	0.0576 Ha	769851
Lot 451 Deposited Plan 507200	Fee Simple Title	0.0576 Ha	769852
Lot 452 Deposited Plan 507200	Fee Simple Title	0.0576 Ha	769853
Lot 453 Deposited Plan 507200	Fee Simple Title	0.0576 Ha	769854
Lot 454 Deposited Plan 507200	Fee Simple Title	0.0587 Ha	769855
Lot 455 Deposited Plan 507200	Fee Simple Title	0.0732 Ha	769856
Lot 456 Deposited Plan 507200	Fee Simple Title	0.0353 Ha	769857
Lot 457 Deposited Plan 507200	Fee Simple Title	0.0437 Ha	769858
Lot 458 Deposited Plan 507200	Fee Simple Title	0.0586 Ha	769859
Lot 459 Deposited Plan 507200	Fee Simple Title	0.0352 Ha	769860
Lot 460 Deposited Plan 507200	Fee Simple Title	0.0912 Ha	769861
Lot 461 Deposited Plan 507200	Fee Simple Title	0.0580 Ha	769862
Lot 462 Deposited Plan 507200	Fee Simple Title	0.0599 Ha	769863
Lot 463 Deposited Plan 507200	Fee Simple Title	0.0581 Ha	769864
Lot 464 Deposited Plan 507200	Fee Simple Title	0.0548 Ha	769865
Lot 465 Deposited Plan 507200	Fee Simple Title	0.0545 Ha	769866
Lot 466 Deposited Plan 507200	Fee Simple Title	0.0509 Ha	769867
Lot 467 Deposited Plan 507200	Fee Simple Title	0.0469 Ha	769868
Lot 468 Deposited Plan 507200	Fee Simple Title	0.0449 Ha	769869
Lot 469 Deposited Plan 507200	Fee Simple Title	0.0450 Ha	769870
Lot 470 Deposited Plan 507200	Fee Simple Title	0.0450 Ha	769871
Lot 471 Deposited Plan 507200	Fee Simple Title	0.0450 Ha	769872
Lot 472 Deposited Plan 507200	Fee Simple Title	0.0450 Ha	769873

# Title Plan - LT 507200

## Created Parcels

Parcels	Parcel Intent	Area	CT Reference
Lot 473 Deposited Plan 507200	Fee Simple Title	0.0450 Ha	769874
Lot 474 Deposited Plan 507200	Fee Simple Title	0.0407 Ha	769875
Lot 475 Deposited Plan 507200	Fee Simple Title	0.0447 Ha	769876
Lot 476 Deposited Plan 507200	Fee Simple Title	0.0508 Ha	769877
Lot 477 Deposited Plan 507200	Fee Simple Title	0.0450 Ha	769878
Lot 478 Deposited Plan 507200	Fee Simple Title	0.0450 Ha	769879
Lot 479 Deposited Plan 507200	Fee Simple Title	0.0450 Ha	769880
Lot 480 Deposited Plan 507200	Fee Simple Title	0.0450 Ha	769881
Lot 481 Deposited Plan 507200	Fee Simple Title	0.0450 Ha	769882
Lot 482 Deposited Plan 507200	Fee Simple Title	0.0450 Ha	769883
Lot 483 Deposited Plan 507200	Fee Simple Title	0.0554 Ha	769884
Lot 484 Deposited Plan 507200	Fee Simple Title	0.0480 Ha	769885
Lot 485 Deposited Plan 507200	Fee Simple Title	0.0489 Ha	769886
Lot 486 Deposited Plan 507200	Fee Simple Title	0.0553 Ha	769887
Lot 487 Deposited Plan 507200	Fee Simple Title	0.0567 Ha	769888
Lot 488 Deposited Plan 507200	Fee Simple Title	0.0596 Ha	769889
Lot 489 Deposited Plan 507200	Fee Simple Title	0.0601 Ha	769890
Lot 490 Deposited Plan 507200	Fee Simple Title	0.0638 Ha	769891
Lot 491 Deposited Plan 507200	Fee Simple Title	0.0383 Ha	769892
Lot 492 Deposited Plan 507200	Fee Simple Title	0.0350 Ha	769893
Lot 493 Deposited Plan 507200	Fee Simple Title	0.0824 Ha	769894
Lot 494 Deposited Plan 507200	Fee Simple Title	0.0813 Ha	769895
Lot 495 Deposited Plan 507200	Fee Simple Title	0.0840 Ha	769896
Lot 496 Deposited Plan 507200	Fee Simple Title	0.0753 Ha	769897
Lot 497 Deposited Plan 507200	Fee Simple Title	0.0625 Ha	769898
Lot 498 Deposited Plan 507200	Fee Simple Title	0.0718 Ha	769899
Lot 499 Deposited Plan 507200	Fee Simple Title	0.0931 Ha	769900
Lot 500 Deposited Plan 507200	Fee Simple Title	0.0975 Ha	769901
Lot 501 Deposited Plan 507200	Fee Simple Title	0.0897 Ha	769902
Lot 502 Deposited Plan 507200	Fee Simple Title	0.0804 Ha	769903
Lot 503 Deposited Plan 507200	Fee Simple Title	0.0719 Ha	769904
Lot 911 Deposited Plan 507200	Vesting on Deposit for Road	1.1202 Ha	
Lot 912 Deposited Plan 507200	Vesting on Deposit for Road	0.4554 Ha	
Lot 973 Deposited Plan 507200	Fee Simple Title	0.0102 Ha	Multiple
Lot 978 Deposited Plan 507200	Fee Simple Title	0.0107 Ha	Multiple
Lot 979 Deposited Plan 507200	Fee Simple Title	0.0100 Ha	Multiple
Lot 1005 Deposited Plan 507200	Fee Simple Title	19.5893 Ha	769905
Area A Deposited Plan 507200	Easement		
Area B Deposited Plan 507200	Easement		
Area E Deposited Plan 507200	Easement		
Area RA Deposited Plan 507200	Land Covenant		
Area RB Deposited Plan 507200	Land Covenant		

# Title Plan - LT 507200

---

## Created Parcels

Parcels	Parcel Intent	Area	CT Reference
Area RR Deposited Plan 507200	Land Covenant		
Area RS Deposited Plan 507200	Land Covenant		
Area F Deposited Plan 507200	Easement		
Area G Deposited Plan 507200	Easement		
Area H Deposited Plan 507200	Easement		
Area I Deposited Plan 507200	Easement		
Area J Deposited Plan 507200	Easement		
Area K Deposited Plan 507200	Easement		
Area L Deposited Plan 507200	Easement		
Area M Deposited Plan 507200	Easement		
Area N Deposited Plan 507200	Easement		
Area RT Deposited Plan 507200	Land Covenant		
Area RU Deposited Plan 507200	Land Covenant		
Area RV Deposited Plan 507200	Land Covenant		
Area O Deposited Plan 507200	Easement		
Area RW Deposited Plan 507200	Land Covenant		
Area RX Deposited Plan 507200	Land Covenant		
Area RY Deposited Plan 507200	Land Covenant		
Area RZ Deposited Plan 507200	Land Covenant		
Area SA Deposited Plan 507200	Land Covenant		
Area SB Deposited Plan 507200	Land Covenant		
Area SC Deposited Plan 507200	Land Covenant		
Area SD Deposited Plan 507200	Land Covenant		
Area SE Deposited Plan 507200	Land Covenant		
Area SF Deposited Plan 507200	Land Covenant		
Area SG Deposited Plan 507200	Land Covenant		
Area SH Deposited Plan 507200	Land Covenant		
Area SI Deposited Plan 507200	Land Covenant		
Area SJ Deposited Plan 507200	Land Covenant		
Area SK Deposited Plan 507200	Land Covenant		
Area SL Deposited Plan 507200	Land Covenant		
Area C Deposited Plan 507200	Easement		
Area D Deposited Plan 507200	Easement		
<b>Total Area</b>		26.3736 Ha	



**Land Registration District**

South Auckland

**Plan Number**

DP 507200

TCC Ref: RC21332-11  
Harrison Grierson Ref: 1500-138804-01

<b>Memorandum of Easements</b> (Pursuant to s243 Resource Management Act 1991)			
<b>Purpose</b>	<b>Shown</b>	<b>Servient Tenement</b>	<b>Dominant Tenement</b>
Right of Way	A	Lot 978 hereon	Lots 441-442 hereon
Right to drain Water & Sewage	B	Lot 979 hereon	Lots 457-458 hereon
Right to convey Electricity, Gas & Water			
Right to convey Telecommunications and Computer Media	E	Lot 973 hereon	Lots 236-237 hereon

<b>Memorandum of Easements in Gross</b> (Pursuant to s243 Resource Management Act 1991)			
<b>Purpose</b>	<b>Shown</b>	<b>Servient Tenement</b>	<b>Grantee</b>
Right to drain Water & Sewage	A	Lot 978 hereon	Tauranga City Council
	B	Lot 979 hereon	
	C	Lot 238 hereon	
	D	Lot 239 hereon	
Right to drain Water	F	Lot 502 hereon	
	G	Lot 501 hereon	
	H	Lot 500 hereon	
	I	Lot 499 hereon	
	J	Lot 498 hereon	
	K	Lot 497 hereon	

<b>Memorandum of Easements in Gross (cont)</b> (Pursuant to s243 Resource Management Act 1991)			
<b>Purpose</b>	<b>Shown</b>	<b>Servient Tenement</b>	<b>Grantee</b>
Right to drain Water	L	Lot 496 hereon	Tauranga City Council
	M	Lot 495 hereon	
	N	Lot 494 hereon	
	O	Lot 1005 hereon	

<b>Schedule of Proposed Easements in Gross</b>			
<b>Purpose</b>	<b>Shown</b>	<b>Servient Tenement</b>	<b>Grantee</b>
Right to convey Telecommunications and Computer Media	A	Lot 978 hereon	Waikato Networks Ltd
	B	Lot 979 hereon	
Right to convey Gas	A	Lot 978 hereon	First Gas Ltd
	B	Lot 979 hereon	

<b>Schedule of Existing Easements in Gross</b> (Pursuant to s243 Resource Management Act 1991)			
<b>Purpose</b>	<b>Shown</b>	<b>Servient Tenement</b>	<b>Grantee / Document Number</b>
Right to drain Water & Sewage	E	Lot 973 hereon	Tauranga City Council EI 10424312.10

<b>Schedule of Existing Easements in Gross</b>			
<b>Purpose</b>	<b>Shown</b>	<b>Servient Tenement</b>	<b>Grantee / Document Number</b>
Right to convey Telecommunications and Computer Media	E	Lot 973 hereon	Waikato Networks Ltd EI 10424312.13
Right to convey Gas			First Gas Ltd EI 10424312.14

Areas F - N, RA- RB, RR - RZ & SA - SL are subject to a Consent Notice.

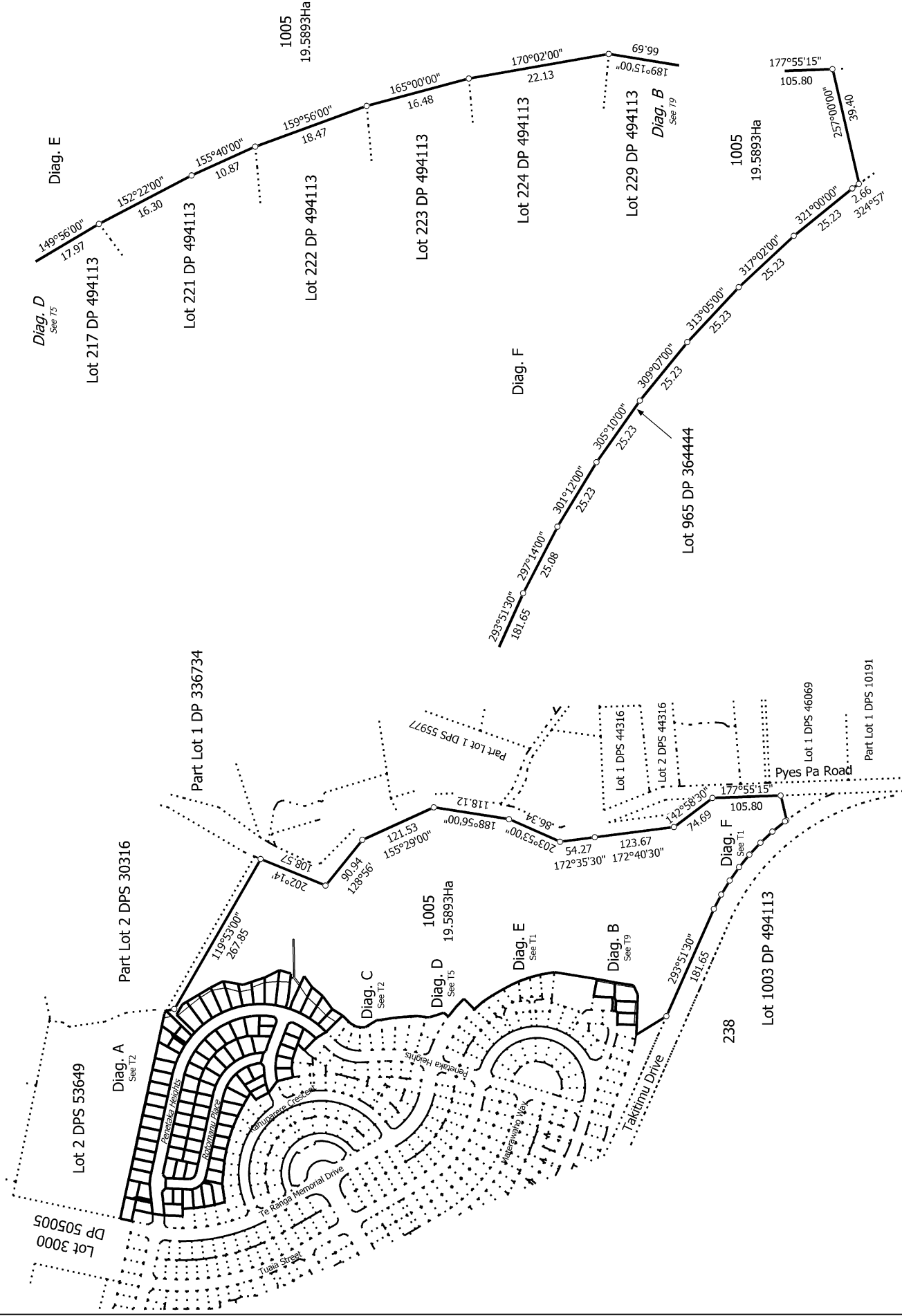


**Amalgamation Conditions**

That Lot 973 hereon be held as 2 undivided one half shares by the owners of Lots 236-237 hereon as Tenants in Common in the said shares and that individual computer registers be issued in accordance therewith. See request 1322193 and 1362181.

That Lot 978 hereon be held as 2 undivided one half shares by the owners of Lots 441-442 hereon as Tenants in Common in the said shares and that individual computer registers be issued in accordance therewith. See request 1322193 and 1362181.

That Lot 979 hereon be held as 2 undivided one half shares by the owners of Lots 457-458 hereon as Tenants in Common in the said shares and that individual computer registers be issued in accordance therewith. See request 1322193 and 1362181.



T 1/9

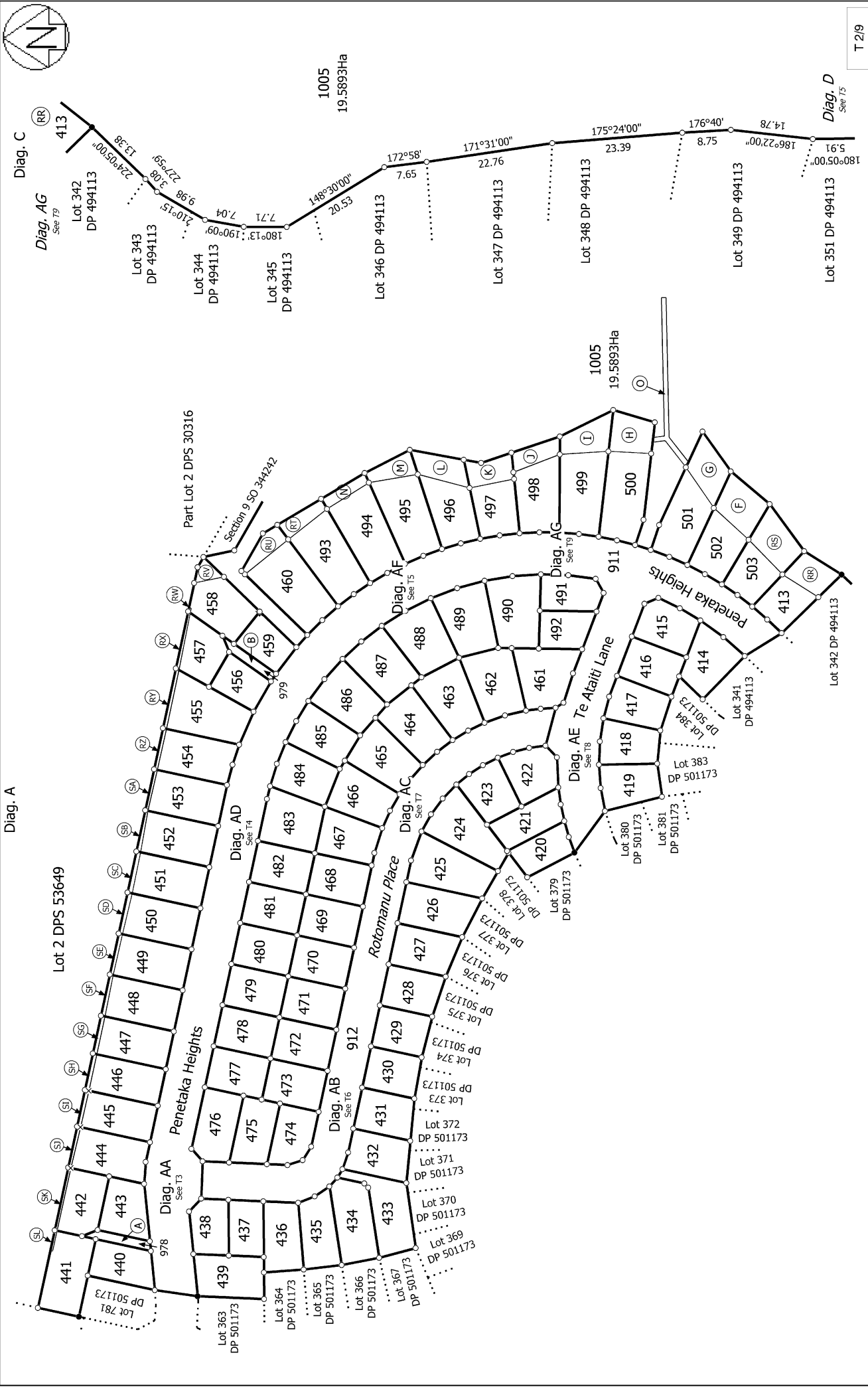
Land District: South Auckland  
 Digitally Generated Plan  
 Generated on: 06/04/2017 10:57:am Page 8 of 16

Lots 236-239, 413-503, 911-912, 973, 978-979 & 1005 being a subdivision of Lot 1004 DP 501173

Surveyor: Michael Peter Dewhurst  
 Firm: Harrison Grierson Consultants Ltd

Title Plan  
 LT 507200  
 Approved on: 6/04/2017





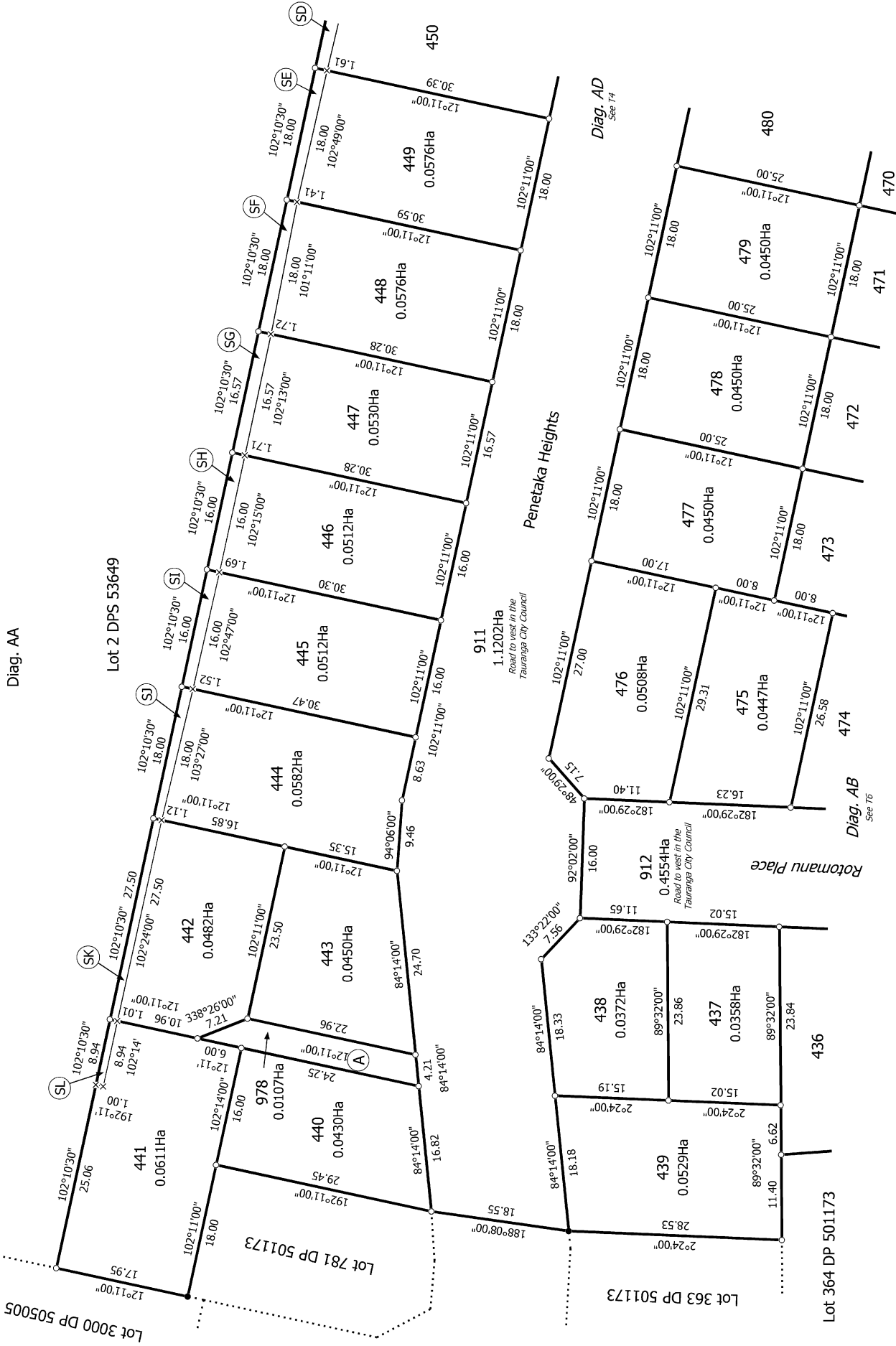
T 2/9

<p>Land District: South Auckland</p> <p><b>Digitally Generated Plan</b></p> <p>Generated on: 06/04/2017 10:57:am Page 9 of 16</p>	<p><b>Lots 236-239, 413-503, 911-912, 973, 978-979 &amp; 1005 being a subdivision of Lot 1004 DP 501173</b></p>	<p>Surveyor: Michael Peter Dewhurst</p> <p>Firm: Harrison Grierson Consultants Ltd</p>	<p><b>Title Plan</b></p> <p><b>LT 507200</b></p> <p>Approved on: 6/04/2017</p>
---	---	--	--



Diag. AA

Lot 2 DPS 53649



T 3/9

Land District: South Auckland

Digitally Generated Plan

Generated on: 06/04/2017 10:57:am Page 10 of 16

Lots 236-239, 413-503, 911-912, 973, 978-979 & 1005 being a subdivision of Lot 1004 DP 501173

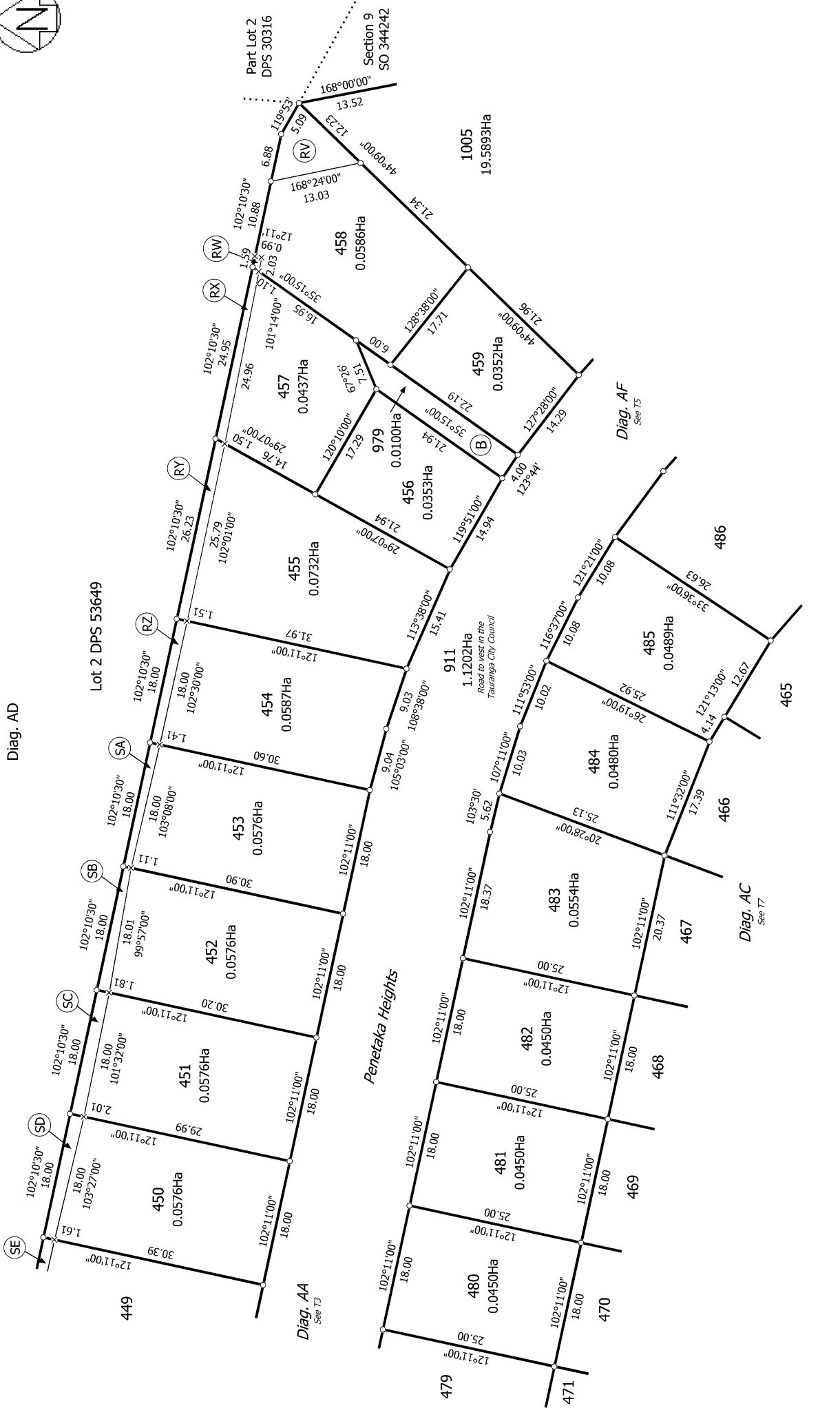
Surveyor: Michael Peter Dewhurst  
Firm: Harrison Grierson Consultants Ltd

Title Plan  
LT 507200  
Approved on: 6/04/2017



Diag. AD

Lot 2 DPS 53649



T 4/9



Diag. D

Diag. C  
See T2

Lot 349 DP 494113

Lot 351 DP 494113

Lot 294 DP 494113

Lot 215 DP 494113

Lot 216 DP 494113

Lot 217 DP 494113

Lot 221 DP 494113

Diag. E  
See T1

T 5/9

Part Lot 2 DPS 30316

Section 9 SO 344242

Diag. AF

Diag. AD  
See T4

Diag. AC  
See T7

Diag. AG  
See T9

Diag. AE  
See T8

Te Ranga Memorial Drive

Penetaka Heights

Road to vest in the  
Tauranga City Council

Title Plan  
LT 507200  
Approved on: 6/04/2017

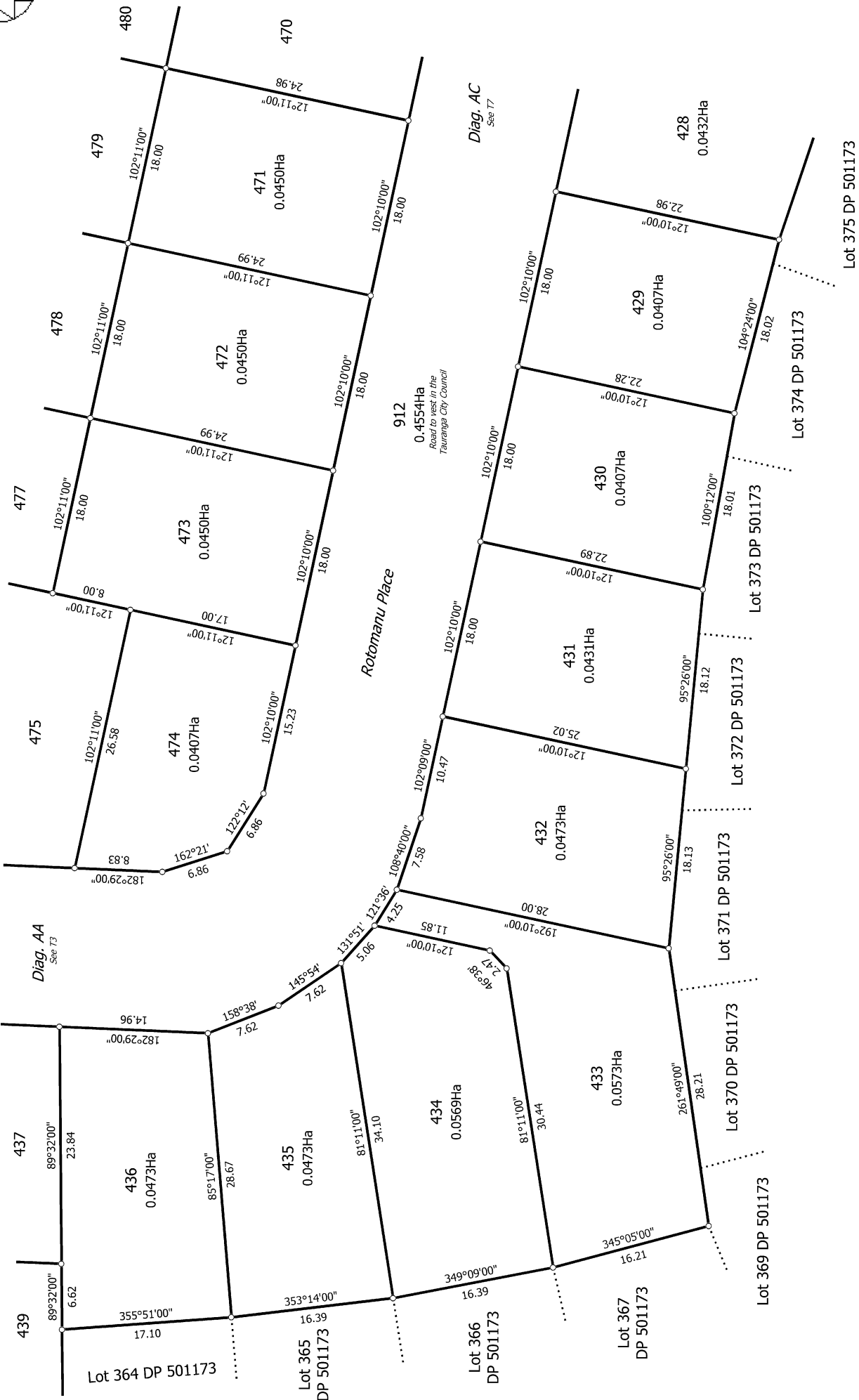
Surveyor: Michael Peter Dewhurst  
Firm: Harrison Grierson Consultants Ltd

Lots 236-239, 413-503, 911-912, 973, 978-979 & 1005 being a subdivision of Lot  
1004 DP 501173

Land District: South Auckland

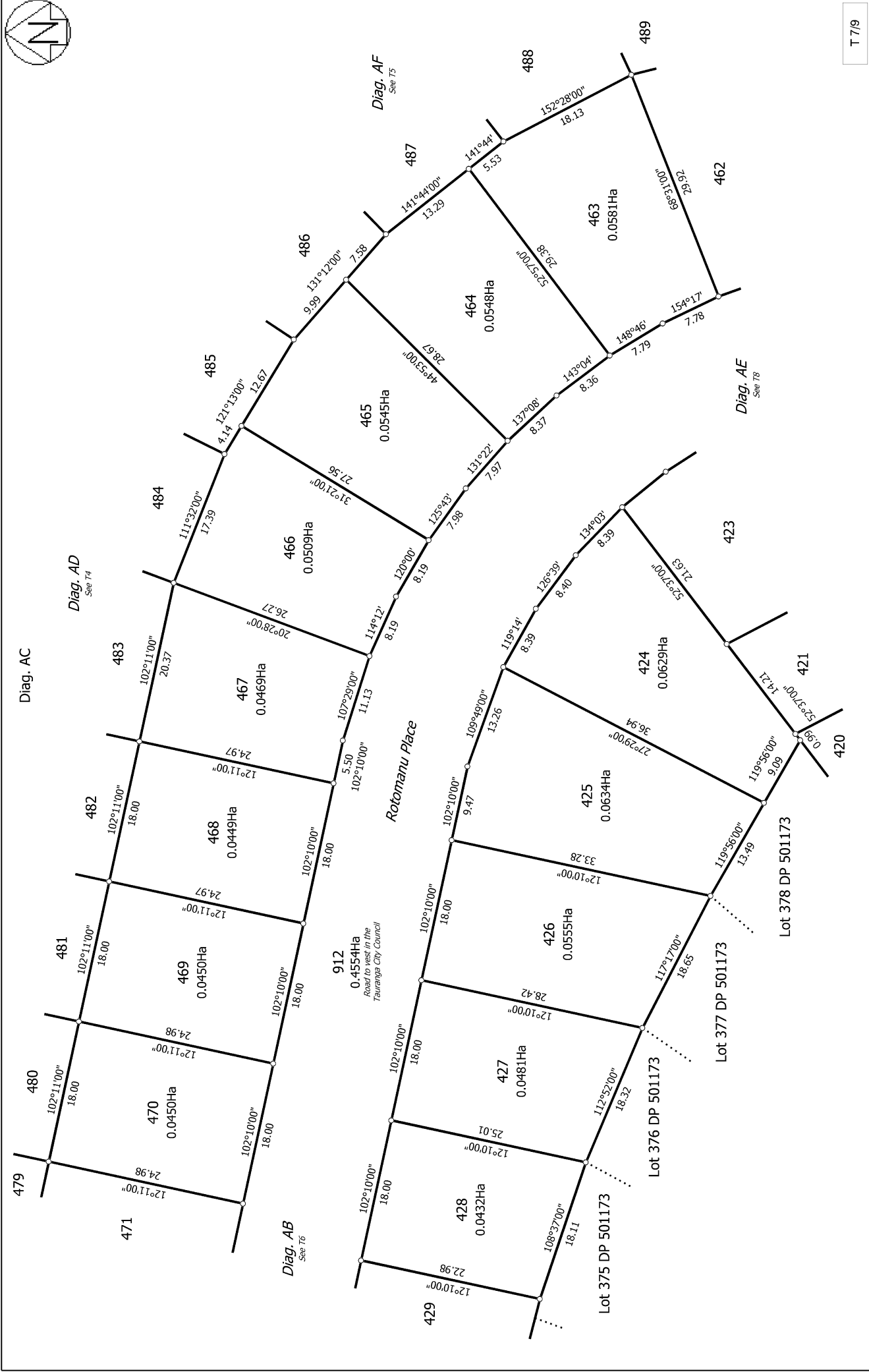
Digitally Generated Plan

Generated on: 06/04/2017 10:57:am Page 12 of 16



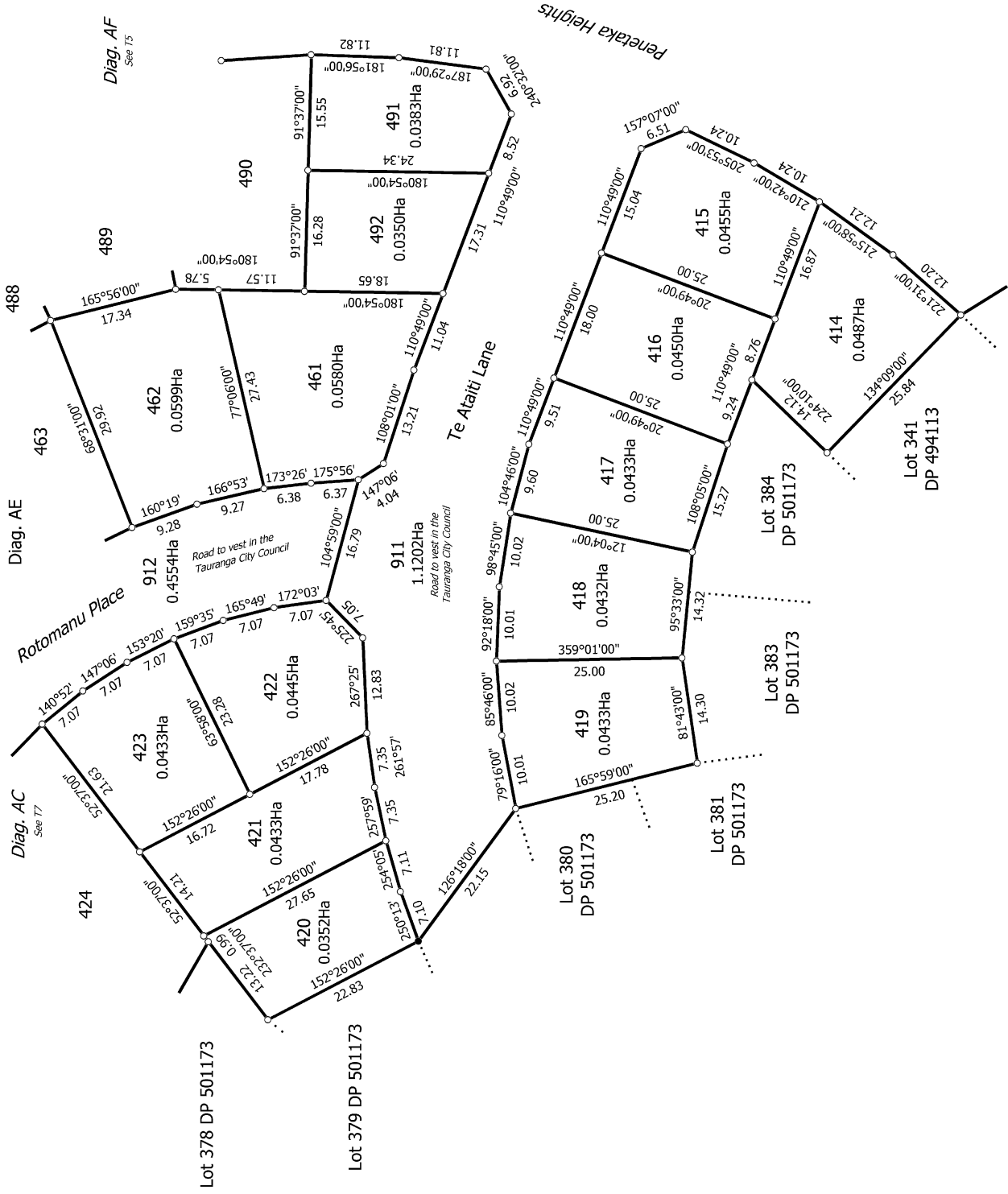
T 6/9

<p>Land District: South Auckland</p> <p><b>Digitally Generated Plan</b></p> <p>Generated on: 06/04/2017 10:57:am Page 13 of 16</p>	<p><b>Lots 236-239, 413-503, 911-912, 973, 978-979 &amp; 1005 being a subdivision of Lot 1004 DP 501173</b></p>	<p>Surveyor: Michael Peter Dewhirst</p> <p>Firm: Harrison Grierson Consultants Ltd</p>	<p><b>Title Plan</b></p> <p><b>LT 507200</b></p> <p>Approved on: 6/04/2017</p>
--	---	--	--



T 7/9

<p>Land District: South Auckland</p> <p><b>Digitally Generated Plan</b></p> <p>Generated on: 06/04/2017 10:57:am Page 14 of 16</p>	<p><b>Lots 236-239, 413-503, 911-912, 973, 978-979 &amp; 1005 being a subdivision of Lot 1004 DP 501173</b></p>	<p>Surveyor: Michael Peter Dewhurst</p> <p>Firm: Harrison Grierson Consultants Ltd</p>	<p><b>Title Plan</b></p> <p><b>LT 507200</b></p> <p>Approved on: 6/04/2017</p>
--	---	--	--



T 8/9

Land District: South Auckland

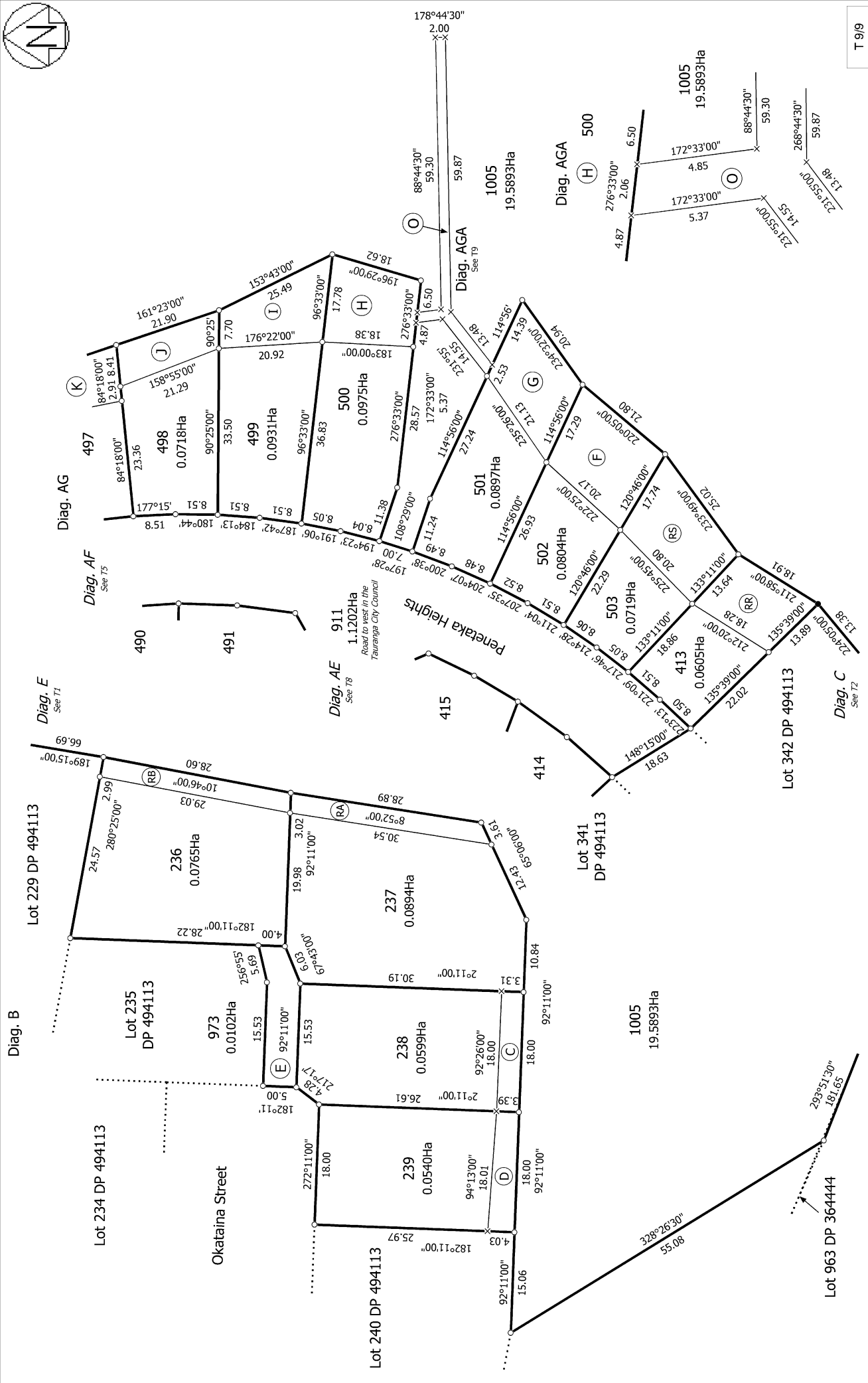
**Digitally Generated Plan**

Generated on: 06/04/2017 10:57:am Page 15 of 16

**Lots 236-239, 413-503, 911-912, 973, 978-979 & 1005 being a subdivision of Lot 1004 DP 501173**

Surveyor: Michael Peter Dewhurst  
Firm: Harrison Grierson Consultants Ltd

**Title Plan  
LT 507200  
Approved on: 6/04/2017**



T 9/9

<p>Land District: South Auckland</p>	<p>Surveyor: Michael Peter Dewhurst Firm: Harrison Grierson Consultants Ltd</p>	<p><b>Title Plan</b> LT 507200 Approved on: 6/04/2017</p>
<p><b>Digitally Generated Plan</b> Generated on: 06/04/2017 10:57:am Page 16 of 16</p>		